

Kostěnice

Na vršič

BEX

CSOV 2

K.L. Doležal
a. Košťálek

CSOV 3

STOKA 07

STOKA 08

STOKA 09

STOKA 10

STOKA 11

STOKA 12

STOKA 13

STOKA 14

STOKA 15

STOKA 16

STOKA 17

STOKA 18

STOKA 19

STOKA 20

STOKA 21

STOKA 22

STOKA 23

STOKA 24

STOKA 25

STOKA 26

STOKA 27

STOKA 28

STOKA 29

STOKA 30

STOKA 31

STOKA 32

STOKA 33

STOKA 34

STOKA 35

STOKA 36

STOKA 37

STOKA 38

STOKA 39

STOKA 40

STOKA 41

STOKA 42

STOKA 43

STOKA 44

STOKA 45

STOKA 46

STOKA 47

STOKA 48

STOKA 49

STOKA 50

STOKA 51

STOKA 52

STOKA 53

STOKA 54

STOKA 55

STOKA 56

STOKA 57

STOKA 58

STOKA 59

STOKA 60

STOKA 61

STOKA 62

STOKA 63

STOKA 64

STOKA 65

STOKA 66

STOKA 67

STOKA 68

STOKA 69

STOKA 70

STOKA 71

STOKA 72

STOKA 73

STOKA 74

STOKA 75

STOKA 76

STOKA 77

STOKA 78

STOKA 79

STOKA 80

STOKA 81

STOKA 82

STOKA 83

STOKA 84

STOKA 85

STOKA 86

STOKA 87

STOKA 88

STOKA 89

STOKA 90

STOKA 91

STOKA 92

STOKA 93

STOKA 94

STOKA 95

STOKA 96

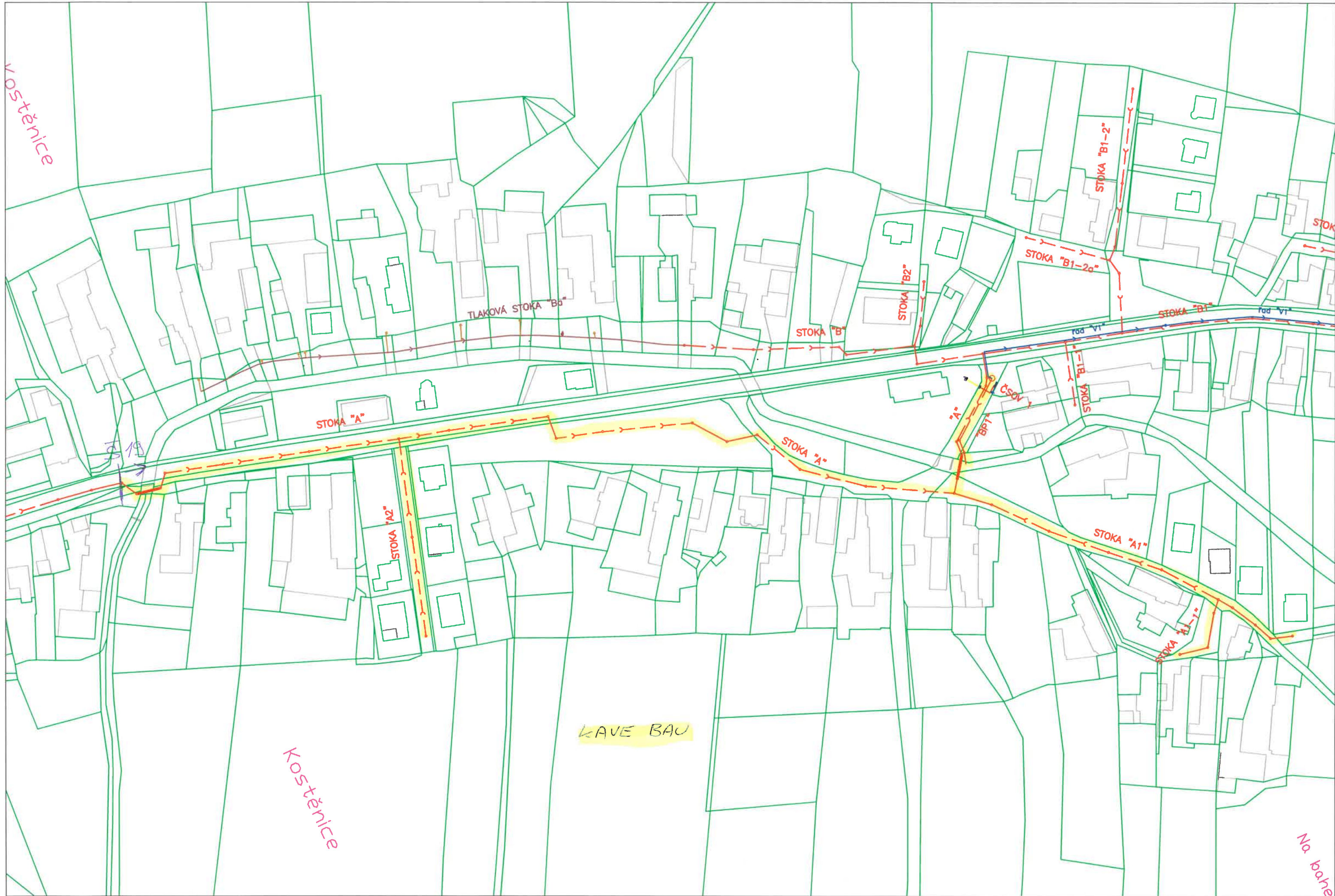
STOKA 97

STOKA 98

STOKA 99

STOKA 100

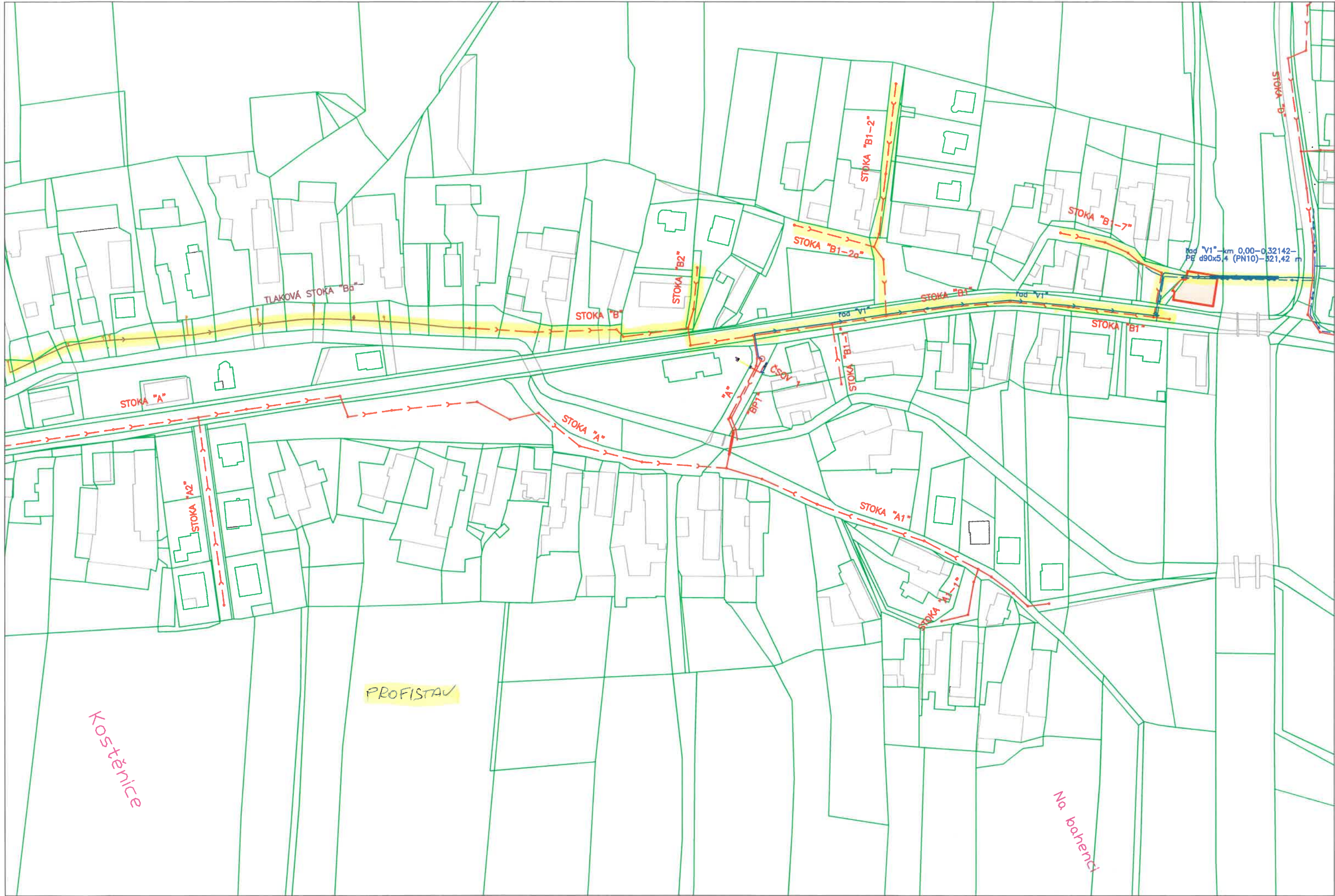
Kostěnice



Kostěnice

KAVE BAU

Na bahe

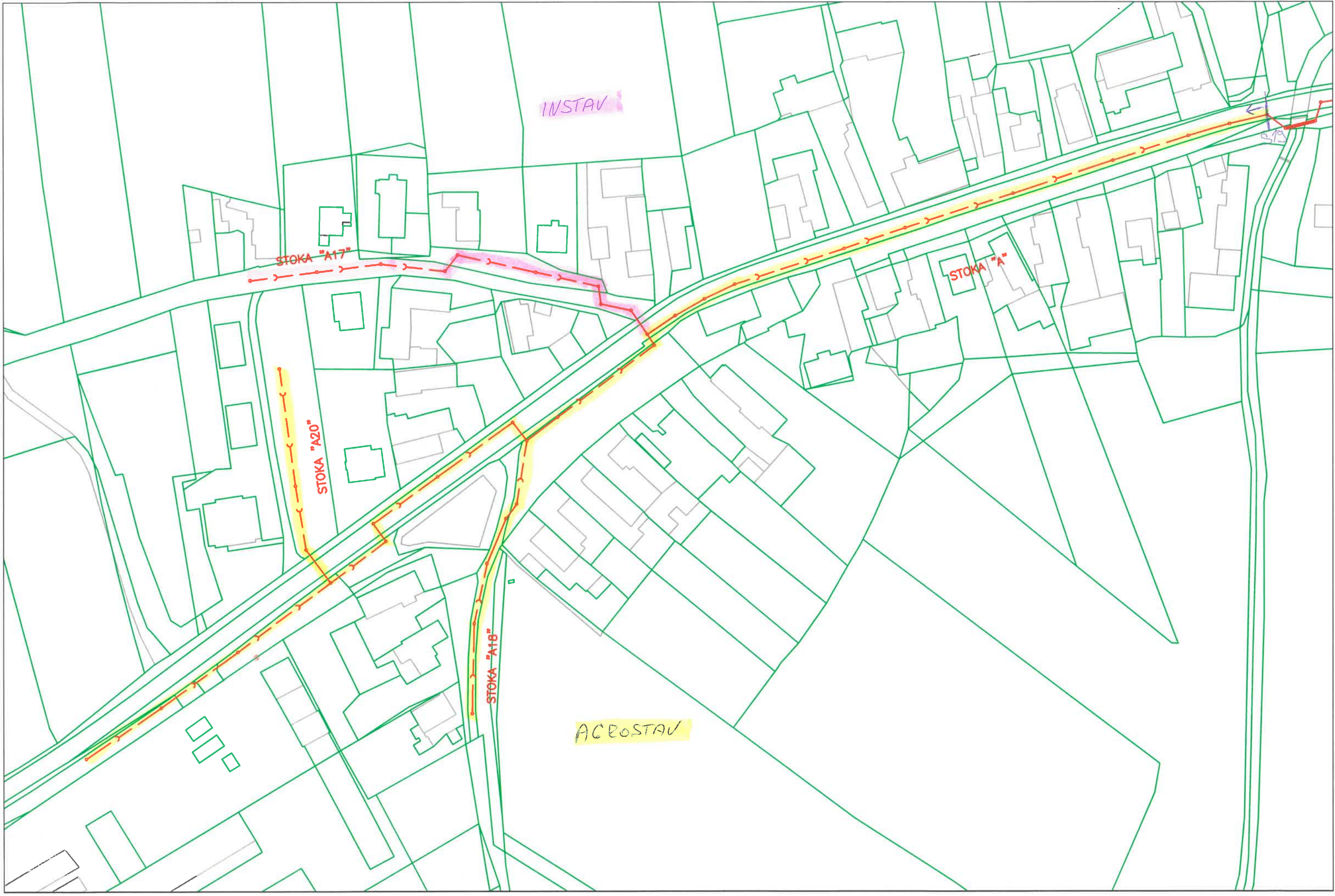


řad "V1"-km 0,00-0,32142-
PE d90x5,4 (PN10)-521,42 m

Kostějnice

PROFISTAV

Na bahenci



INSTAV

STOKA "A17"

STOKA "A"

STOKA "A20"

STOKA "A18"

ACROSTAV